

The Jericho Project:

“Third Generation” Victims of the Israeli-Palestinian Conflict in Search of Awe, Cooperation, Justice, Security, and Prosperity

May 2016 International Center for Conciliation



International Center for Conciliation

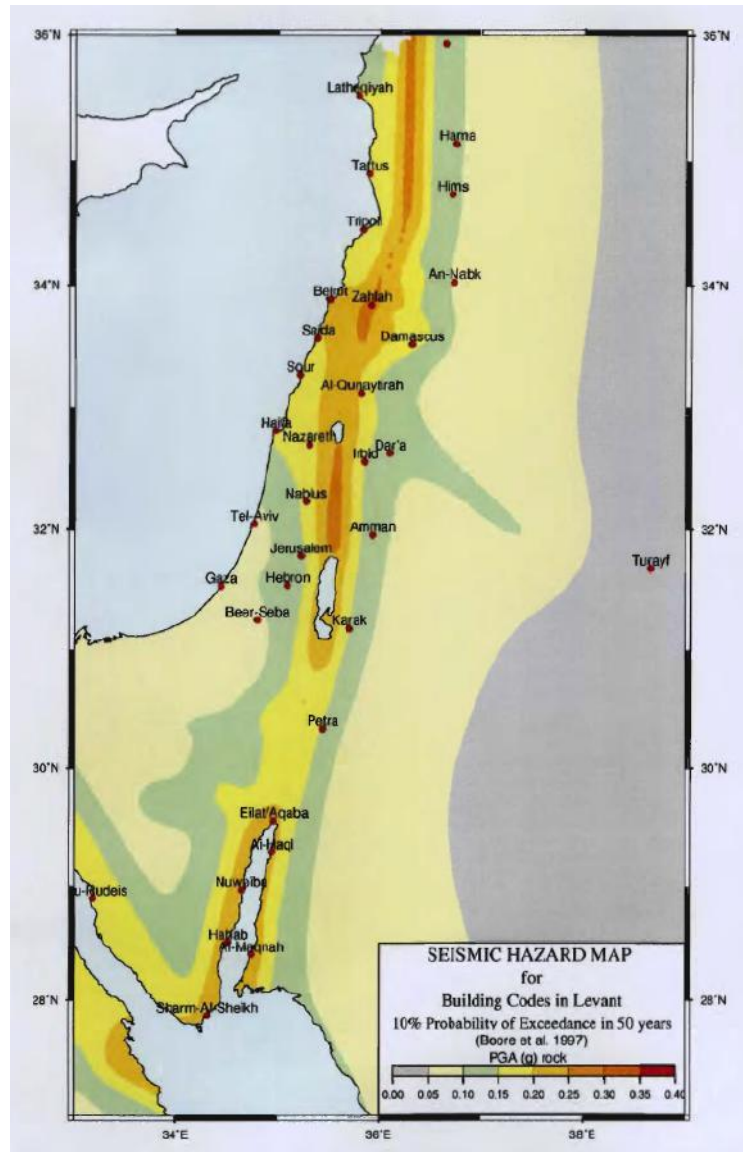
P.O. Box 15001 | Boston, MA 02215 | 617.353.4428 | www.centerforconciliation.org



In Sponsorship with the Mayor of Jericho and Municipality
and An-Najah National University, Nablus

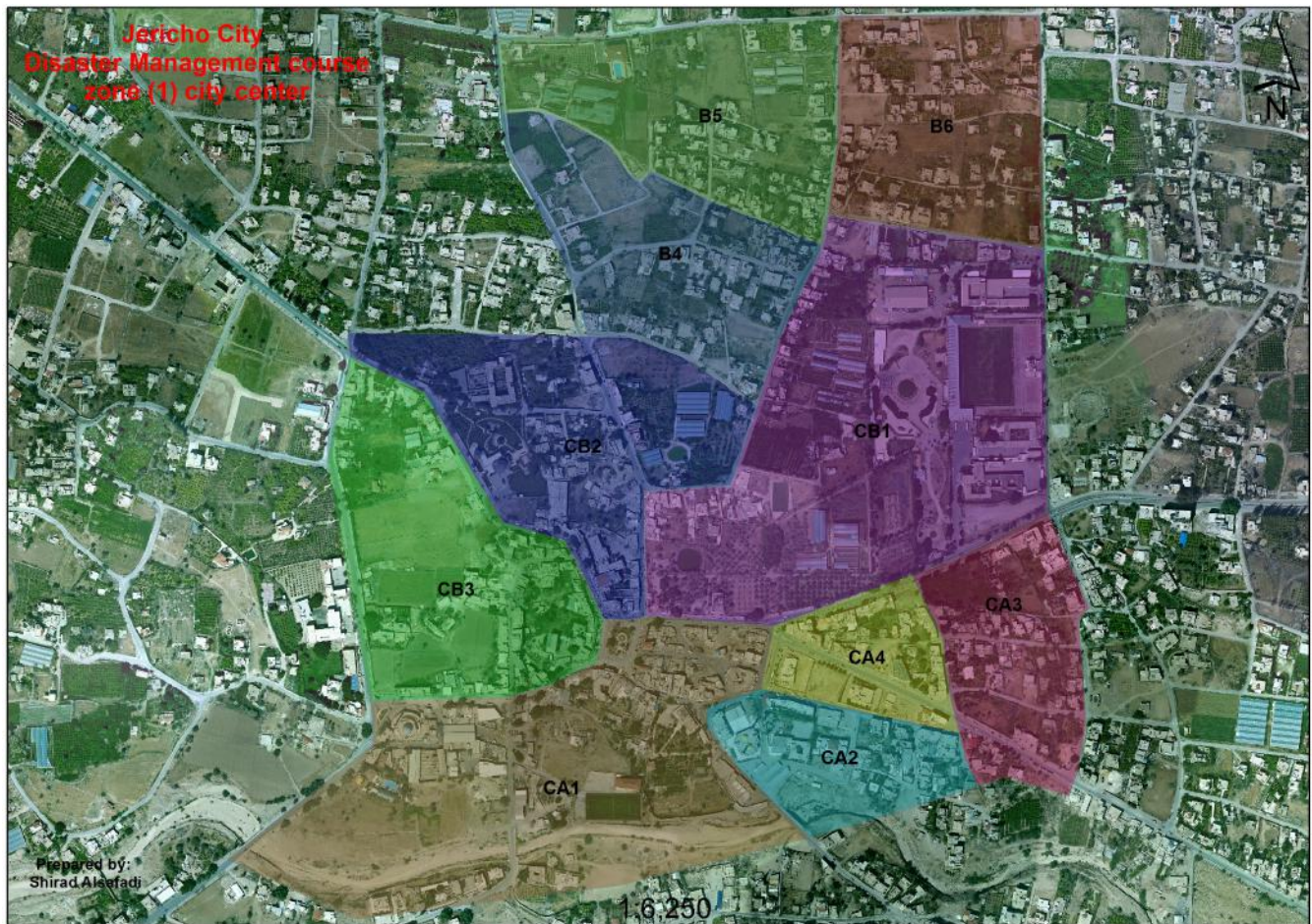


RENEWING THE OLDEST AND MOST DISASTER PRONE CITY IN THE WORLD:
NEIGHBORS BUILDING HOPE AND TRUST
THROUGH DISASTER PREPAREDNESS AND COMMUNITY DEVELOPMENT



Seismic Hazard Map of Levant Region from Earthquake Hazard Assessments for Building Codes: Final Report (2007).

For Jericho and areas just north of the Dead Sea including Nablus, the earthquake peak ground acceleration (PGA) that has a 10% chance of being exceeded in 50 years has a value between 25 and 30% g. The area known to be “The Holy Land” sits on top of the most violent earthquake fault, connecting the Middle East and the Gulf States. Recent devastating earthquakes, from Turkey to Iran and Iraq, illustrate the dangers confronting the people of Palestine, Jordan, and Israel. The preparedness of Jericho sets the standards for humanitarian interventions called for across national borders and throughout the world. It is all the more necessary because of the increasing vulnerabilities due to climate change.



This map was designed by Engineer Shiraz Sefadi, Head of the Jericho GIS Division and Director of the Jericho Project Field Work. Based on her research and scanning, she divided Jericho and the surrounding UNWRA refugee camps into Vulnerability Zones based on seismic risks, flash flood and mud & boulder slide paths, and socio-economic and demographic factors of the population. The Fellows, divided into teams, were given clear paths to conduct interviews and to identify neighborhood monitors, candidates for special training to supervise future rescue activities.



Town Meeting conducted by Hillel Levine with citizens of a village on the Jordan side of the Jordan River, precisely above the Dead Sea fault, discussing earthquake preparedness and the hopes and fears of people in the region. (July 2013)



Hillel Levine with Reverend Andrew Wingate, a leader of the Anglican Church, and Suleman Nagdi, Head of the Muslim Community Council of Leicester, advisers to the ICfC on issues of religious moderation and improving relations and cross-border cooperation in the Middle East.
(April 2015)



Fellows from ICfC's Disaster Preparedness workshop in the classroom, out in the field, and conducting intensive interviews at the homes of Jericho residents at risk for earthquakes, flashfloods, and mud- and boulder-slides from surrounding mountains. (May 2016)



A Jericho expert on vulnerable populations including women, children, the disabled, and members of minority groups draws upon her vast experiences in clinical and field work to emphasize the special attention that these populations need before, during, and after disasters. Senior Engineer Shirad Safadi focuses the discussion on capacities and technologies of Jericho and how to better organize them in confronting disasters.



Fellows actively engaging in discussion in seminars in preparation for their report to the Mayor and leaders of Jericho on the current situation and what are the needs to involve the people of Jericho and their leaders in community based preparedness. Dr. Jalal Dabbeek, professor of engineering and Director of Urban Planning & Disaster Risk Reduction Center at an-Najah National University in Nablus, science advisor to the ICfC and co-founder and director of the Jericho Project inspires the fellows in eight introductory lectures on the geological, seismological and environmental issues prevalent in the region of Jericho and the work of and his long involvement in the international problems of community preparedness.



Community leaders of many backgrounds, including Imams and religious counselors of distinction were invited to join the discourse on religious responses to disaster and how ordinary people respond. They helped the fellows better understand how ideas, beliefs and the innate faith of people from many religious backgrounds can motivate compassion, empathy, and heroic actions by ordinary people.



Hillel Levine with the Mayor of Jericho and the Head of the Islamic Waq at the closing ceremony and banquet where he was presented with a plaque honoring the contributions of the International Center for Conciliation to the safety, security, community solidarity, preparedness and cooperation in confronting future natural disasters, and for introducing this model to the people of Palestine. (May 2016)